

# Anti-H\_CD276(B7H3) hIgG1 Antibody

## (enoblituzumab)

### Product information

GM-24026AB-10	10 µg
GM-24026AB-100	100 µg
GM-24026AB-1000	1 mg

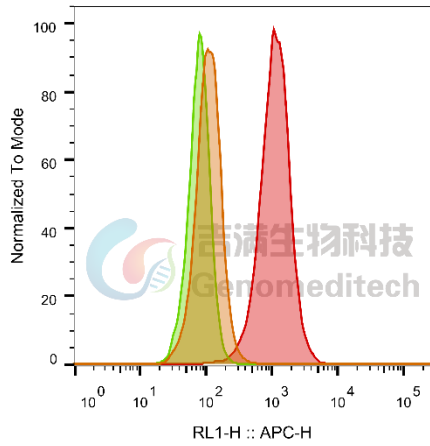
### Antibody Information

Species Reactivity	Cynomolgus;
Clone	enoblituzumab
Source/Isotype	Monoclonal human IgG1,λ
Application	Flow cytometry
Specificity	Detects CD276(B7H3)
Gene	CD276(B7H3)
Other Names	4Ig-B7-H3, B7-H3, B7H3, B7RP-2
Gene ID	A0A7N9CYV2 (Cynomolgus)
Background	CD276, also known as B7-H3, is an important immune regulatory molecule and a member of the B7 family. CD276 is highly expressed in various tumors and is closely associated with the occurrence, development, and prognosis of cancer. Studies have shown that CD276 can inhibit the activation and proliferation of T cells by interacting with its receptor between T cells and tumor cells, thereby suppressing the immune cells' attack on tumors, promoting tumor evasion, and development.
Storage	Store at 2-8°C short term (1-2 weeks).Store at ≤ -20°C long term. Avoid repeated freeze-thaw.
Formulation	Phosphate-buffered solution, pH 7.2.
Endotoxin	< 1 EU/mg, determined by LAL gel clotting assay

## Data Examples

Flow cytometry

Cynomolgus\_CD276 CHO-K1 Cell Line (Catalog # GM-C23914) was stained with Anti-H\_CD276(B7H3) hIgG1 Antibody (enoblituzumab) (Catalog # GM-24026AB) or isotype control antibody, followed by anti-Human IgG APC-conjugated Secondary Antibody.



SampleID	Geometric Mean : RL1-H
CHO-K1 anti-H_CD276+APC-2nd Ab	110
CHO-K1 Cyno_CD276 H_IgG+APC-2nd Ab	80.0
CHO-K1 Cyno_CD276 anti-H_CD276+APC-2nd Ab	1089

Fig. FACS